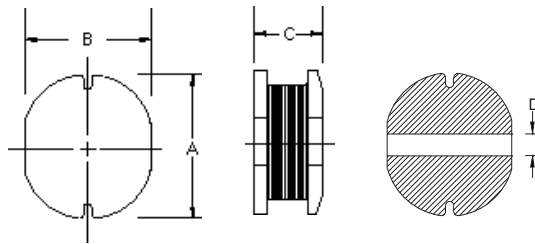


### HPC1004 TYPE

#### TYPE

HPC 1004: 10 $\mu$ H ~ 560 $\mu$ H



A : 10.0 $\pm$ 0.3  
B : 9.0 $\pm$ 0.3  
C : 4.0 $\pm$ 0.5  
D : 2.1 REF

#### DIMENSION

#### SPECIFICATION

| ITEM    | L             | DCR               | IDC      |
|---------|---------------|-------------------|----------|
| HPC1004 | ( $\mu$ H)    | MAX. ( $\Omega$ ) | MAX. (A) |
| 100M    | 10 $\pm$ 20%  | 0.05              | 2.38     |
| 120M    | 12 $\pm$ 20%  | 0.06              | 2.13     |
| 150M    | 15 $\pm$ 20%  | 0.07              | 1.87     |
| 180M    | 18 $\pm$ 20%  | 0.08              | 1.73     |
| 220M    | 22 $\pm$ 20%  | 0.09              | 1.60     |
| 270M    | 27 $\pm$ 20%  | 0.10              | 1.44     |
| 330M    | 33 $\pm$ 20%  | 0.12              | 1.26     |
| 390M    | 39 $\pm$ 20%  | 0.15              | 1.20     |
| 470M    | 47 $\pm$ 20%  | 0.17              | 1.10     |
| 560K    | 56 $\pm$ 10%  | 0.20              | 1.01     |
| 680K    | 68 $\pm$ 10%  | 0.22              | 0.91     |
| 820K    | 82 $\pm$ 10%  | 0.25              | 0.85     |
| 101K    | 100 $\pm$ 10% | 0.34              | 0.74     |
| 121K    | 120 $\pm$ 10% | 0.40              | 0.69     |
| 151K    | 150 $\pm$ 10% | 0.54              | 0.61     |
| 181K    | 180 $\pm$ 10% | 0.62              | 0.56     |
| 221K    | 220 $\pm$ 10% | 0.72              | 0.53     |
| 271K    | 270 $\pm$ 10% | 0.95              | 0.45     |
| 331K    | 330 $\pm$ 10% | 1.10              | 0.42     |
| 391K    | 390 $\pm$ 10% | 1.24              | 0.38     |
| 471K    | 470 $\pm$ 10% | 1.53              | 0.35     |
| 561K    | 560 $\pm$ 10% | 1.90              | 0.32     |

K:  $\pm$ 10% M:  $\pm$ 20%

\* Hong can design any part to your requirements with different inductance.

\* All parameters as this content presented are subject to final specifications both sides confirmed.